

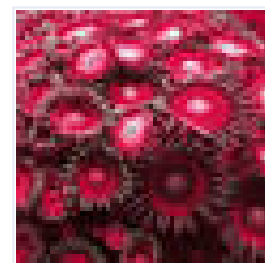
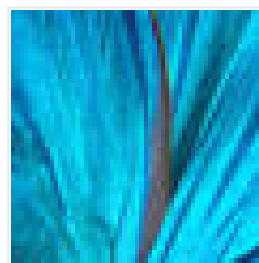
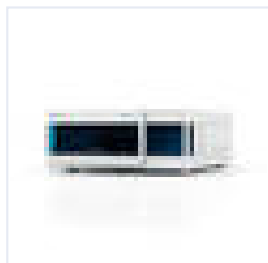
# AZURA Detector MWD 2.1L

Multiwavelength detector

Article Nr.: ADB01



AZURA Detector MWD  
2.1L



(fileadmin/user\_upload/produkte/files/Bilder/Produkte/produkte/detectors/azura/AZURA\_MWD\_21L\_vr.jpg)

The MWD 2.1L is an 8 channel, sensitive multiwavelength detector combining high performance with easy handling at an affordable price.

A wide range of easily exchangeable cartridge flow cells make this device the right choice for fast, standard analytical, semi-preparative and preparative separations with bio-inert or stainless steel wetted parts.

State-of-the-art total reflection flow cells (LightGuide technology) are available for this device providing maximum light throughput (due to total internal reflection) with minimal peak dispersion (due to the small cell volume) to guarantee an optimized S/N ratio.

An optional fiber optics adapter offers the possibility to separate the flow cell spatially from the device and thus provides enhanced security for hazardous, explosive or toxic work processes, as well as protecting the device from leakages at high flow rates.

The newly developed optical unit and intelligent temperature management ensure for maximum sensitivity combined with minimal baseline drift.

Furthermore, easy frontal access and improved safety features enable effortless lamp replacement. This eases maintenance and guarantees short downtimes.

This device is also easily upgradable to a diode array detector.

The MWD 2.1L comes installed with a deuterium lamp which covers a wavelength range from 190 to 700 nm. This detector can be controlled with OpenLab® EZChrom and ClarityChrom® software, as well as from an optional touch display (stand-alone operation), via LAN or through analog input/output, allowing it to be integrated into almost any LC system.

### Key features

- wide application range
- remote flow cells available (fiber optics)
- user friendly
- attractively priced
- impressive sensitivity/price ratio

## Details

Detection	
Detector type	Multiwavelength detector
Detection channels	8 (digital) 4 (analog)
Light source	Deuterium (D <sub>2</sub> ) lamp with integrated GLP chip
Wavelength range	190 - 700 nm
Spectral bandwidth	< 8 nm at H <sub>α</sub> line (FWHM) <i>Note: digital bandwidth 1 - 32 nm</i>
Wavelength accuracy	± 0.5 nm
Wavelength precision	0.1 nm
Wavelength verification	Internal holmium filter and deuterium lines
Noise	± 5 μAU at 254 nm
Drift	300 μAU/h at 254 nm
Linearity	> 1.6 AU at 274 nm
Time constants	0.0 / 0.1 / 0.2 / 0.5 / 1.0 / 2.0 / 5.0 / 10.0 s

<b>Flow cell</b>	Not included (see Accessories / Spare parts)
<b>Integration time</b>	Automatic (5-1000 ms)
<b>Communication</b>	
<b>Maximum data rate</b>	100 Hz (LAN) 12.5 Hz (analog)
<b>Inputs</b>	Error (IN), Start (IN), Autozero
<b>Outputs</b>	Events 1 - 2, Error (OUT), + 5 V, Valve + 24 V, Valve (OUT)
<b>Analog outputs</b>	4 x 0 - 5 V, 16 bit
<b>Control</b>	Digital: LAN-DHCP, remote connector Manual: Mobile Control, Control Unit (optional)
<b>Programming</b>	Wake up
<b>Technical parameters</b>	
<b>GLP</b>	Detailed report including lamp recognition, operating hours, lamp operating hours, number of lamp ignitions
<b>Display</b>	Optional Mobile Control or Control Unit
<b>Ambient conditions</b>	Temperature range: 4 - 40 °C, 39.2 - 104 °F Humidity: below 90 % noncondensing
<b>General</b>	
<b>Power supply</b>	100 - 240 V, 50 - 60 Hz, 75 W
<b>Dimensions</b>	361 x 158 x 523 mm (W x H x D)
<b>Weight</b>	12.2 kg
<b>Leak sensor</b>	Yes
<b>Note</b>	Flow cells are not included and must be ordered separately (see Accessories / Spare parts)

## Downloads

AZURA Detector DAD 6.1L, DAD 2.1L, MWD 2.1L user manual, V6700	AZURA DAD 6.1L, DAD 2.1L, MWD 2.1L user manual (fileadmin/user_upload/produkte/files/Dokumente/detectors/azura/manuals/V6700_AZUR A_DAD-MWD_user_manual_EN.pdf)	AZURA Detector DAD 6.1L, DAD 2.1L, MWD 2.1L user manual, V6700	English
--	---	--	---------

AZURA Detektor DAD 6.1L, DAD 2.1L, MWD 2.1L Benutzerhandbuch, V6700	AZURA Detektor DAD 6.1L, DAD 2.1L, MWD 2.1L Benutzerhandbuch (fileadmin/user_upload/produkte/files/Dokumente/detectors/azura/manuals/V6700_AZURA_DAD-MWD_Benutzerhandbuch_DE.pdf)	AZURA Detektor DAD 6.1L, DAD 2.1L, MWD 2.1L Benutzerhandbuch, V6700	Deutsch
Device support in KNAUER CDS / KNAUER device support in 3rd party software	List of supported devices in chromatography data systems (fileadmin/user_upload/produkte/files/Dokumente/software/supported_instruments.pdf)	Device support in KNAUER CDS / KNAUER device support in 3rd party software	English

## Accessories / Spare parts

Tablet 8" (Windows 8/8.1) (en/product/tablet_8_windows_881.html)	with AZURA Mobile Control	A9606
Control Unit CU 2.1- Discontinued. Successor: Mobile Control (en/product/control_unit_cu_21_discontinued_successor_mobile_control.html)	Direct control of AZURA devices via touchscreen	AZD00
Tool kit AZURA (en/product/tool_kit_azura-2.html)	tool kit for systems with PEEK or precut capillaries	A1033
Standard KNAUER LightGuide UV Flow Cell Cartridge (en/product/standard_knauer_lightguide_uv_flow_cell_cartridge.html)	10 mm path length, 1/16", 2 µl volume, 100 bar, biocompatible	AMC19
High Sensitivity KNAUER LightGuide UV Flow Cell Cartridge (en/product/high_sensitivity_knauer_lightguide_uv_flow_cell_cartridge.html)	50 mm path length, 1/16", 6 µl volume, 100 bar, biocompatible	AMD59
Cartridge Fiber Optics Adapter (en/product/cartridge_fiber_optics_adapter.html)	for AZURA DAD 6.1L, DAD 2.1L, MWD 2.1L detectors	AMKX8
Cartridge Test Cell (en/product/cartridge_test_cell.html)	for AZURA DAD 6.1L, DAD 2.1L, MWD 2.1L detectors	AMLX8
Deuterium Lamp (en/product/deuterium_lamp.html)		A5193

		for AZURA UVD 2.1S, UVD 2.1L, DAD 2.1L, MWD 2.1L and Smartline 2520 detectors	
	Accessory kit AZURA DAD 6.1L (en/product/accessory_kit_azura_dad_61l.html)	included in shipkit	FDC
	Accessory kit AZURA large devices (en/product/accessory_kit_azura_large_devices.html)	cable kit for all devices with footprint "L" included in shipkit	FZA02

## Related products

	AZURA Detector DAD 6.1L (en/product/azura_detector_dad_61l.html)	190 - 1000 nm, diode array detector	ADC11
	AZURA Detector DAD 2.1L (en/product/azura_detector_dad_21l.html)	190 - 700 nm, diode array detector	ADC01

Technical data are subject to change without notice.

© 2015 KNAUER Wissenschaftliche Geräte GmbH