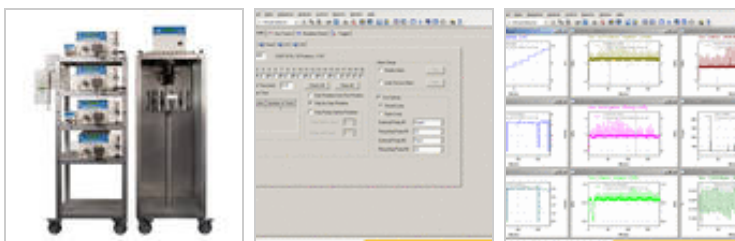


SMB System CSEP® C9812 production unit

Article number: A28706



The SMB System CSEP C9812 Production Unit is designed for the extraction of pure substances in kilogram-scale. Special emphasis is put on the continuous operation mode and high productivity.

The system works thermostatically and can be operated with up to 12 SMB separation columns of the same type. The patented multifunctional valve drastically reduces the dead volume and provides for the compact design. Due to its mode of operation, the system works very efficiently.

[Click here for more information on simulated moving bed technology \(SMB\)...»](#)

Technical data are subject to change without notice.

© 2015 KNAUER Wissenschaftliche Geräte GmbH