

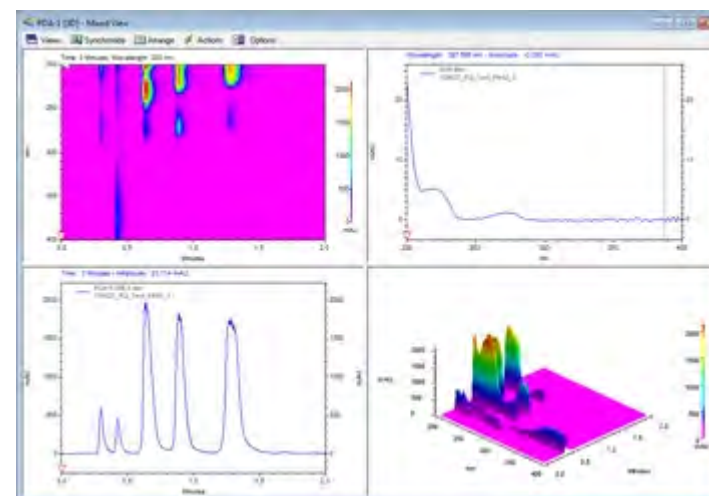


## OpenLAB® CDS Software EZChrom Edition

OpenLAB CDS EZChrom Edition is the next generation of chromatography data systems and the successor of ChromGate CDS. OpenLAB CDS EZChrom Edition provides chromatography data acquisition, processing and control of GC and LC chromatographs and is used in chromatography operations ranging from single user/single instrument to multi-user/multi-instrument laboratories. It provides support of devices from KNAUER and many other manufacturers. Beside the drivers for our devices, KNAUER has also implemented features you will not find in the original OpenLAB CDS EZChrom Edition, as an option for adjust method settings during a run or advanced fraction collection functionality.

[Request info or a quote](#)

Help



# Free Demo version of OpenLAB®

To evaluate if OpenLAB holds up to your expectations, you can test OpenLAB CDS with a free 60- day trial version with full features. Perfect for those who'd like to try before they buy.

Please contact us!

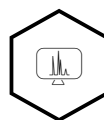
## Request demo



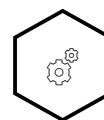
Built-in custom calculations eliminate errors caused by data export



Advanced reporting capabilities allow to generate complex reports



Easy instrument management increases lab efficiency and instrument uptime



A scalable architecture that allows the system grow with your lab

## OpenLAB® technical data

Help are

**Software  
name****OpenLAB CDS EZChrom Edition****Extensions  
/ Licenses****Fraction collection, System suitability****System  
architecture****32-bit CDS****Operating  
system****Depends on CDS version. Latest version, supported by KNAUER drivers, is A.04.09. It runs on Windows 10 Prof./Enterprise 64-bit and Windows 7 Prof. 32- and 64-bit.**

## Expandability

**Stand-alone****on a Workstation or AIC max. 3 systems or 2 systems with 3D data acquisition****Client/server****Client/Server functionality allows for using license keys from any computer in the network, full control of a control-PC (server) from any other computer (Client) in the network (Distributed System)****Multi-user  
environment****allows to create users in the system with individual access management or to apply users from the Windows domain or local PC****Network****Runs in Windows networks basing on TCP/IP****Help environment**

<b>Fields of application</b>	Analytical HPLC, preparative HPLC, GC
<b>Supported instruments</b>	all currently offered KNAUER devices are supported from the KNAUER drivers for OpenLAB CDS EZChrom Edition, drivers and licenses from many other manufacturers als available
<b>Instrument connection</b>	supports RS-232, Ethernet, A/D-D/A interface
<b>Recommended PC hardware</b>	Workstation or Client: Pentium 3 GHz, 4 GB RAM, 160 GB hard disk, separate graphics card if one PC should control more than one system; Shared Services Server: Pentium 3 GHz, 4/6 GB RAM (32/64 bit), 160 GB hard disk
<b>Graphics capabilities</b>	Multiple chromatogram view and overlay, PDA view, arrange all open windows
<b>Integration</b>	Real-time analysis of peaks, automatic or manual integration and baseline correction
<b>Calculation types</b>	with/without calibration (int./ext. standard method)
<b>Security and GLP</b>	software verification report, declaration of software validation, FDA 21 CFR Part 11 conformance, validation of integration, audit trail
<b>Instrument Help</b>	method-based instrument control, Instrument status display and Direct-Control mode, Direct Control can also be enabled for a run

<b>Calibration</b>	several types of calibration curves, unlimited number of levels, several reference and ISTD peaks possible, groups, unlimited number of standards (peaks), LOD, LOQ
<b>Chromatogram operations</b>	Overlay view, mathematical operations and smoothing
<b>Automation</b>	Sequences, Run Queue allows submitting of single runs and/or sequences, automatic launch of selected commands, user programs or applications if the data acquisition is finished, post run, batch
<b>Presentation of results</b>	different report templates available, method custom report and advanced reports for individual reports, new Intelligent Reporter allows for creating complex reports in a drag-and-drop editor with pre-configured tables, graphics and matrices, results can be shown in chromatogram
<b>Calculations</b>	mathematical operations and smoothing, column performance calculations USP, DAB...
<b>Data import and export</b>	ASCII, ANDI (AIA) standard, OLE, ODBC
<b>Special features</b>	Direct Control during a run, pretreatment, stacked injection

## Additional options/extensions

### Help option

always included, for preparative HPLC, adds tools for detector controlled fraction collection, solvent and peak recycling

**FRC  
features**

fractionation can be controlled by time (volume), level, slope including AND/OR combination of these criteria, spectra comparison, local maximum and local minimum, slices, full manual control of fractionation during a run

**PDA  
option**

3D chromatogram, peak purity analysis, spectrum search in self-made or commercial spectra library

**GPC/SEC  
option**

license is discontinued

**System  
suitability  
test**

license always included, automates the calculation of system suitability parameters for system validation

## LICENSES



### **OpenLAB CDS EZChrom Edition - Workstation**

OpenLAB® CDS EZChrom Edition  
workstation for one system with  
SMA and 4x System Suitability

**Article No.: A2600-1**



### **OpenLAB CDS EZChrom Edition - Distributed systems**

OpenLAB® CDS EZChrom Edition  
for distributed systems - please ask  
for desired configuration

**Article No.: A2614-1**



### **OpenLAB CDS EZChrom Edition - Instrument Control**

OpenLAB® CDS EZChrom Edition  
Instrument Control License

**Article No.: A2602-1**

**Help**



**OpenLAB CDS EZChrom Edition -  
PDA / 3D UV for PDA detectors**  
OpenLAB® CDS EZChrom Edition  
3D UV Option for DAD DAD6.1L,  
DAD2.1L, PDA-1, S2850

**Article No.: A2611-1**



**OpenLAB CDS EZChrom Edition -  
PDA / 3D UV for KNAUER scanning  
UV detectors**  
OpenLAB® CDS EZChrom Edition  
3D option for UV detectors MW-1,  
2550 and 2600

**Article No.: A2610-1**



**OpenLAB CDS EZChrom Edition  
Upgrade**  
Cross-Upgrade to Distributed  
System, includes System Suitability,  
Fraction Collector Control and  
Software Maintenance Agreement

**Article No.: A2608-1**

## OpenLAB CDS Hardware and Software Requirements

EZChrom and Chemstations Editions

Help

Manual English



---

## OpenLAB CDS Hardware and Software Requirements

Manual    German

---

## Webinar OpenLAB 20121023

KNAUER OpenLAB-Software – the next generation of HPLC software

English

---

## Webinar OpenLAB 20121023

German

---

**Help**