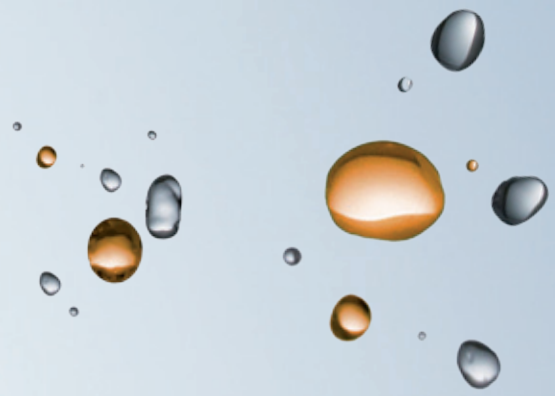


Preparative SFC

Prep Scale Separation - Compact Design



sepiatec
SEPARATION INNOVATION AUTOMATION



Sepiatec's new **Prep SFC** system is a compact benchtop unit designed for preparative separations using supercritical fluid chromatography.

Measuring just 71 x 60 x 71 cm or 28 x 24 x 28 inch (W x D x H) the system offers all the advantages of SFC technology such as fast separations, reduced consumption of organic solvents, lower costs, improved environmental compatibility and increased safety.

The equipment of the Prep SFC system includes:

- a high pressure pump for CO₂,
- a high pressure pump for modifiers,
- a back pressure regulator,
- a syringe pump for sample injection,
- a UV/VIS detector,
- a fractionation module,
- an integrated computer with a 10" touch-screen,
- the Prep SFC control software.

Due to its compact design the footprint of the Prep SFC system is comparatively small and precious laboratory space can be saved. The clear arranged assembly of the Prep SFC system allows easy access to all of its components.

The fractionation module of the Prep SFC system includes a selector valve and a gas/liquid separator. It is designed for 8 sample bottles with a volume of 1 litre each. Due to the flexible outlets even bigger sample containers with volumes up to several litres can be used.

The user-friendly control software can be used via the 10" touch-screen, which is placed ergonomically on the upper front of the Prep SFC system. A separate computer and a monitor are unnecessary, additional bench space is not required.

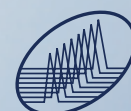
Subject to modifications.

Technical Data:

- Operating mode: 1 Preparative column
- Solvents: CO₂ and organic solvents
- Number of solvents: 3 solvents
- CO₂ pump: 100 ml head, 400 bar
- Modifier pump: 100 ml head, 400 bar
- Operating pressure: Up to 300 bar, adjustable online backpressure control
- Injection: Total loop with syringe pump
- Columns: 20 to 30 mm ID up to 250 mm length
- Column oven: 10°C to 70°C, integrated heating module, injection valve and UV flow cell
- Detection: UV/VIS detector 190-740 nm
- Fraction collection: 1 to 8 fractions (standard 8 x 11 bottles)
- Software: Prep SFC control software
- System Controller: Integrated PC, 10" TFT touch-screen
- Connections: USB ports for mouse/keyboard, Ethernet
- Dimensions: 71 x 60 x 71 cm or 28 x 24 x 28 inch (W x D x H)

Sepiatec GmbH
 Louis-Blériot-Strasse 5
 12487 Berlin
 Germany

Phone: +49 30 63 22 34 0
 Fax: +49 30 63 22 34 10
 info@sepiatec.com
 www.sepiatec.com



sepiatec
 SEPARATION | INNOVATION | AUTOMATION