



Article No.: ADD38

Articlename: High Flow Rate Compatible Refractive Index Detector for Liquid Chromatography and Process Technology

High Flow Rate Compatible Refractive Index Detector for Liquid Chromatography and Process Technology

Preparative refractive index detector

The AZURA RID 2.1L HighFlow is a sensitive and competitively priced differential refractometer. It is suitable for detecting compounds with little or no UV activity such as alcohols, sugars, lipids or polymers in high concentrations. This instrument is designed for use in semi-preparative and preparative HPLC (high performance liquid chromatography) as well as under certain conditions for GPC (gel permeation chromatography) applications. The intelligently designed optical unit with advanced temperature control ensures high sensitivity, fast baseline stabilization, and excellent reproducibility. Furthermore, the long-life LED, highly pressure resistant flow cell, improved safety features and enhanced diagnostics functions guarantee easy handling and minimal maintenance. The wide linear dynamic range of 0.1 to 1000 µg/ml and 0.1 to 1000 µl/min maximum flow rate make the AZURA RID

Help

2.1L HighFlow the perfect choice for most laboratory tasks.

This detector can be controlled with OpenLAB[®] EZChrom, ClarityChrom[®] and PurityChrom[®] Bio software, as well as from the AZURA Mobile Control app (stand-alone operation), via LAN or through analog input/output, allowing it to be integrated into almost any LC system. Learn more in our video:



Help



AZURA RI Detector 2.1L HighFlow

KEY FEATURES



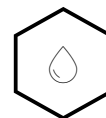
Temperature controlled
optical unit



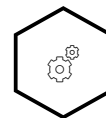
Long-life LED



Pressure resistant flow
cell



Leak management



Made in Germany

Help

TECHNICAL DATA

Help

Detection

Detector type	Refractive index detector
Version	preparative
Light source	Long-life LED
Detection channels	1
Refractive index range	1.00 - 1.75 RIU
Noise	± 50 nRIU
Drift	2000 nRIU/h
Linearity	> 4000 µRIU
Flow cell	5 bar back pressure resistance Flow cell included
Max. flow rate	100 ml/min (pure water)
Flow cell volume	9 µl
Wetted materials	Stainless steel / fused silica / PTFE / PEEK
Temperature control	OFF, 30 - 55 °C (1 °C increment)

Help

Time constants	0.00 / 0.01 / 0.02 / 0.05 / 0.1 / 0.2 / 0.5 / 1.0 / 2.0 / 5.0 / 10.0 s
Maximum data rate	100 Hz (LAN)/20 Hz (Analog)
Autozero	Full range
Leak sensor	Yes (internal and external leak management)

Communication

Inputs	Error (IN), Start (IN), Autozero, Flush (IN)
Outputs	Event 1, Start (OUT), Error (OUT), + 5 V, 24 V Valve
Analog outputs	1 x 0- 2.5 V scalable, 20 bit, offset adjustable
Control	Mobile Control, software, event control, analog, terminal protocol
Interfaces	2 x LAN (RJ-45, dual IP-stack), USB (service only), multi-pin connector, analog (cinch connector)

Help

Technical parameters

GLP	Detailed report including operating hours, light source operating hours
Display	Mobile Control (optional)
Ambient conditions	Temperature range: 4 - 40 °C, 39.2 - 104 °F, Humidity: below 90 % noncondensing

General

Power supply	100 - 240 V, 50 - 60 Hz, 65 W
Dimensions	361 x 158 x 523 mm (W x H x D)
Weight	10.8 kg

Other

Optional accessories	Mobile Control
-----------------------------	----------------

Help

ACCESSORIES & SPARE PARTS



Tool kit AZURA
Tool Kit AZURA® for systems with
PEEK or pre-cut capillary kits

Article No.: A1033



**Accessory kit AZURA RID 2.1L
HighFlow**
included in shipkit

Article No.: FDD38



**Display software for AZURA
devices with data acquisition incl.
tablet**

Mobile Control Chrom with data
acquisition including tablet and
mount

Article No.: A9608

Help

DOCUMENTS AND MORE INFORMATION

AZURA Detektor RID 2.1L Betriebsanleitung DE (V6750)

Manual German

AZURA Detector RID 2.1L Instructions EN (V6750)

Manual English

AZURA Détecteur RID 2.1L Instructions FR (V6750)

Manual French

Analysis of non-UV absorbing substances with AZURA RID 2.1

Refractive Index Detector Kit Pittcon 2017

Information English

Information German

List of supported devices in chromatography data systems EN (V1663)

Device support in KNAUER CDS / KNAUER device support in 3rd party software

Help

Information English

VSP0012N Rapid performance verification of AZURA systems with refractive index detector

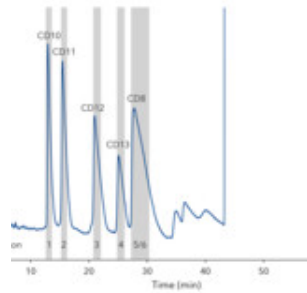
This application note is a guideline describing step-by-step a compact performance verification (PV) of AZURA® Analytical HPLC systems including a refractive index detector, using a reversed phase (RP) column and a standard test solution (VSP0012N)

Application	English
-------------	---------

Application	German
-------------	--------

Help

APPLICATIONS FOR THIS PRODUCT



**Cyclodextrin
purification Part 2**



**Characterization of
fructans in
fermentation
products with
GPC/SEC**

Help

RELATED PRODUCTS



**Accessory kit AZURA RID 2.1L
HighFlow**
included in shipkit
Article No.: FDD38



**Highly sensitive refractive index
detector for liquid chromatography**
AZURA® Detector RID 2.1L
analytical refractive index detector
with flow cell
Article No.: ADD31

RELATED FAQs

What is RI detection?

Detection

[Help](#)

Certified Quality



KNAUER is known for the quality of its products and has been certified several times. We produce high-tech laboratory instruments for research, routine analysis and production for 59 years.

[See all Quality certificates](#)

In addition, we have extended documentation about all our products, including **CE Declarations of Conformity**.

[See all CE Declarations of conformity](#)

Innovation and quality - since 1962. Made in Germany.



Do you need more details or a quote?

We are happy to help you



+49 30 809727-0



sales@knauer.net

Technical data or prices are subject to change without notice. Prices may vary by country and do not include taxes, customs duties or delivery. All trademarks are the property of their respective owners. Our general terms and conditions apply: www.knauer.net/terms

Help