

# SEPMATIX 8x SFC

Rapid Method Development in Parallel Mode



# SEPMATIX 8x SFC

The Sepmatix SFC 8x parallel system combines Sepiatec's proven parallel HPLC technology with the advantages of supercritical fluid chromatography.

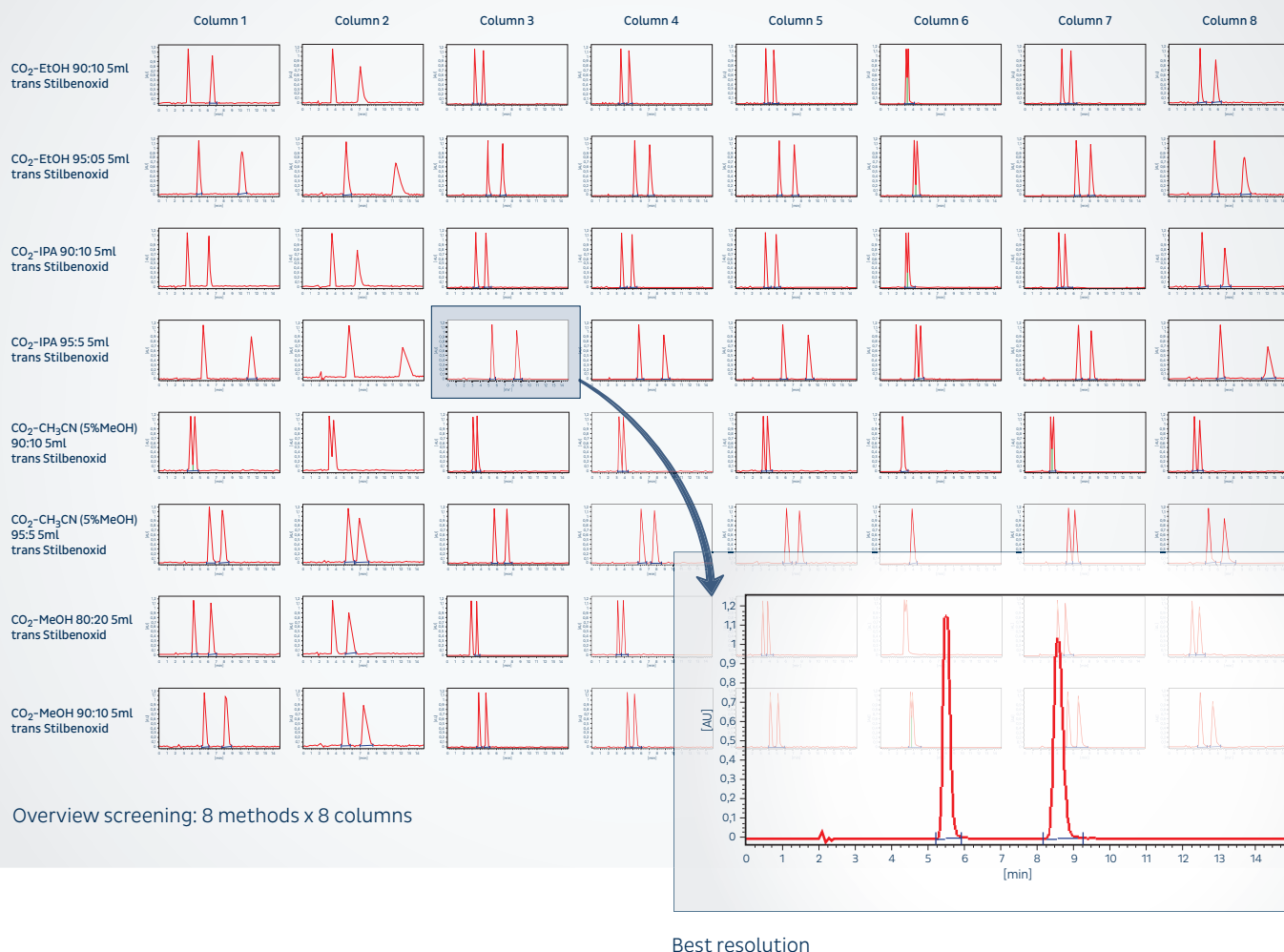
The result is the first SFC system with eight separating columns working in parallel, high operating speed and as yet unmatched performance.

In a space of only a few minutes for example enantiomers can be separated on eight different

chiral columns at the same time. The automatic variation of the eluents makes it possible to determine the optimal chiral separation in a significantly shorter time than was previously possible.

The superb Chiral Column Screening Wizard software clearly displays the separations achieved in up to 80 chromatograms at the same time. The separation with the best peak resolution is immediately discernible.





The software considerably reduces the amount of time the user needs for the selection process. The overview display is extremely suitable for presentations.

As far as the Sepmatix SFC system's technical features are concerned, only one CO<sub>2</sub> pump and one modifier pump are needed. Using Sepiatec's patented FlowControl the flow is divided into eight channels and regulated exactly by electronically controlled valves.

A backpressure regulator, an autosampler, a detector with eight DAD modules and a column oven for heating or for cooling purposes are

part of the standard equipment. With minor modifications the Sepmatix SFC system is also suited to chromatography using organic solvents.

On request, a Sepmatix software module is available that can automatically identify the best separations, and which can relay the applications and columns to an automated preparative system.

**Seplatec GmbH** • Louis-Blériot-Str. 5 • 12487 Berlin, Germany

Phone: +49 (0) 30 / 63 22 34 0 • Facsimile: +49 (0) 30 / 63 22 34 10 • [info@seplatec.com](mailto:info@seplatec.com) • [www.seplatec.com](http://www.seplatec.com)



## TECHNICAL DATA

### SEPMATIX 8x SFC

System	8 channel HPLC system with Flow Control unit
Operating mode	Up to 8 columns in parallel
Number of solvents	Up to 18 solvents with optional Sepmatix Eluent Rack
CO <sub>2</sub> pump	100 ml pump head, 400 bar
Modifier pump	100 ml pump head, 400 bar
Operating pressure	Up to 300 bar, adjustable online back pressure control
Flow control	8x Sepmatix Flow Control, 3 – 6 ml/min supercritical fluid per channel
Injections	Total loop
Columns	Up to 250 mm length, any vendor
Column oven	10° – 70° C
Detector	8x Diode Array Detector, 8x 10 mm flow cells, pressure stable
Software	Sepmatix Control Software, Screening Wizard Software
Dimensions	70 x 55 x 95 cm (W x D x H)